

# LightIR 20-275mm f/5.5, Motorized Continuous Focus 680314

NEW



WFOV(EFL 20mm)

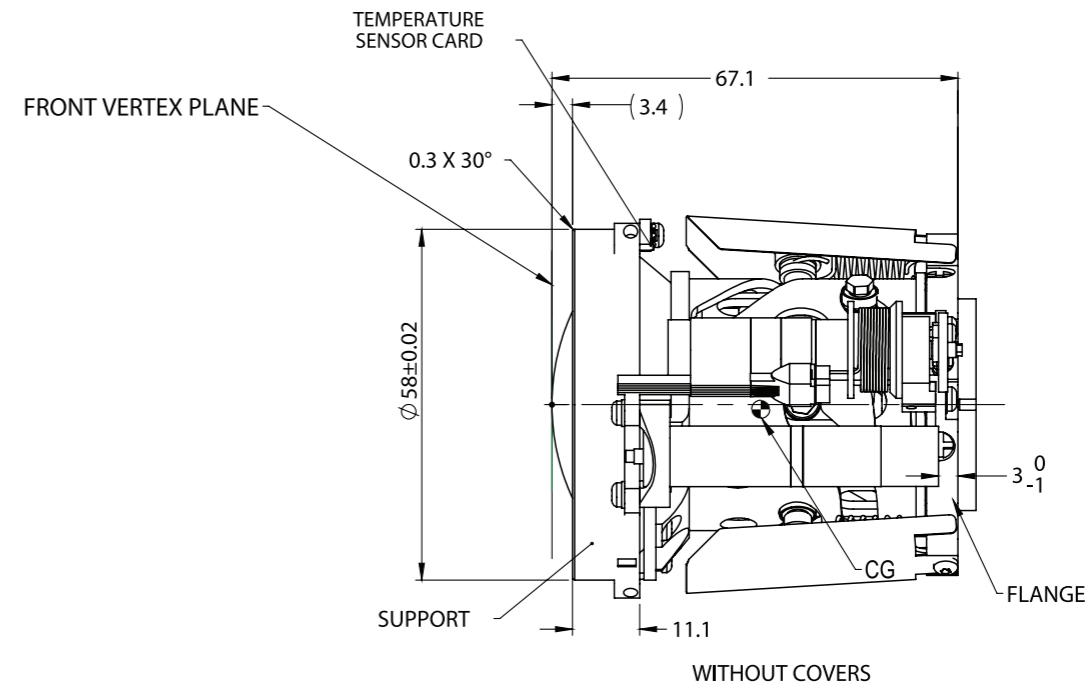
HFOV[deg]	480x384	640x512
20μ	28.0	
15μ	20.9	28.0

NFOV(EFL 275mm)

HFOV[deg]	320x240	480x384	640x512
20μ	1.3	1.9	
15μ	1.0	1.5	1.9

Property	Value	
Optical	WFOV	NFOV
Focal Length	20mm	275mm
F/#	5.5	
Cold Stop to FPA Distance	19.4mm	
Cold Stop CA	Ø3.52mm	
Average Transmission (3.6-4.9μm)	80%	
Back Focal Length	23.52mm in air	
Distortion	<5%	
Minimum Focus Range	5m	50m
Nuc (by defocus)	Yes	
Mechanical		
Focus Mechanism	Motorized	
Focus Time (minimum range to ∞)	≤ 8 sec.	
Zoom Mechanism	Motorized	
Zoom Time (NFOV to WFOV)	≤ 5 sec	
Through-zoom boresight	0.5mm on detector plane	
Weight	264gr	
Max. Dimensions	Ø58mm x 67.1mm	

TYPICAL ICD



Property	Value
Electrical	
Lens Control	Designated lens controller
Drive Voltage	12VDC
Current Consumption	0.2A average, 1.0A peak
Communication Protocol	RS485, RS422
Environmental	
Operating Temperature	-35°C to + 65°C
Storage Temperature	-40°C to + 80 °C
Sealing	IP 67 front element only
Configurations	
680314-001	High Durability
680314-002	Hard Carbon